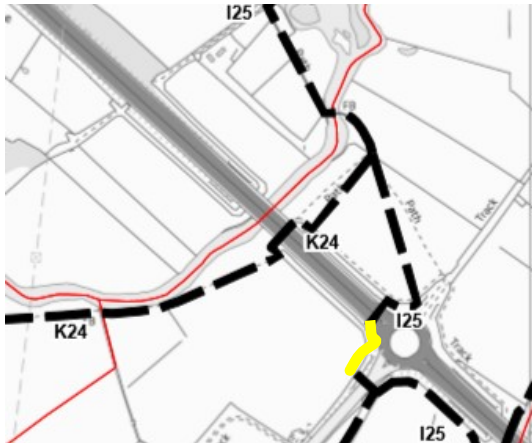


Location: I25 A6 Underpass Towards Mountsorrel
Task # 27
Date: 19 September 19 **Review Date:** Jan 20
Map:

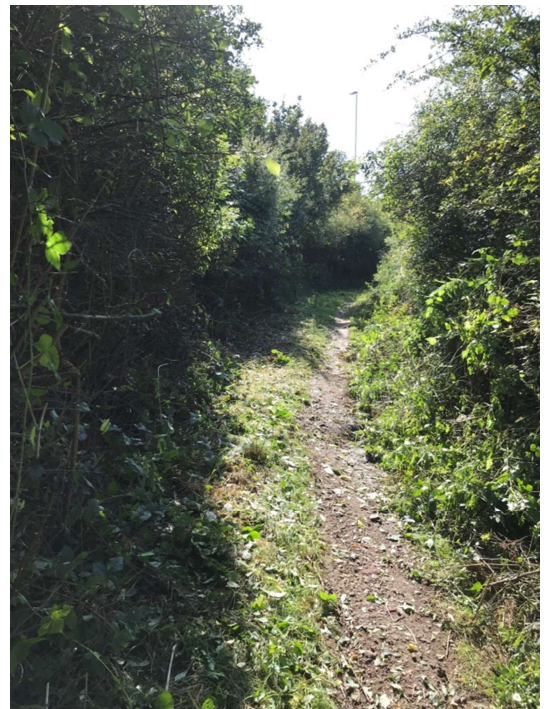


We tried to cut this path a few weeks ago but we were defeated by the underpass being flooded! This week we had glorious sunshine to help us on our way. We concentrated on cutting back the path that is between the 2 sections of the A6 underpass.

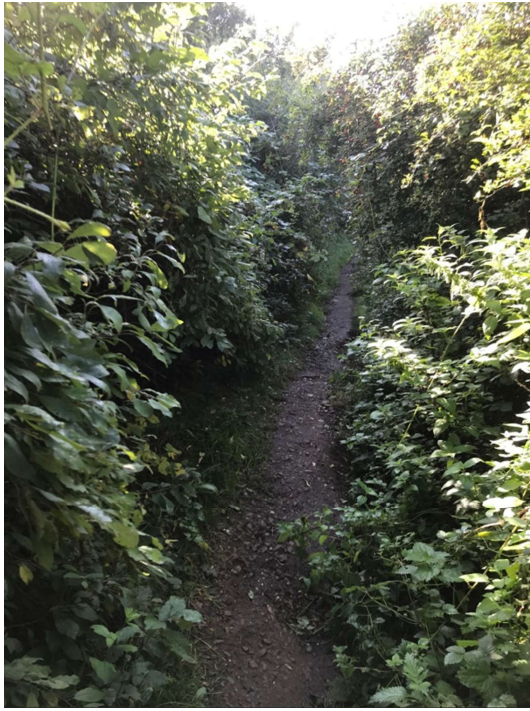
The before photos don't really show how narrow this footpath had become over the summer months. Before we started it was narrow, very slippy and full of brambles and thorns.



Start of the path - Before



Start of the path - After



Before



After



We cut back lots of overgrowth from both sides of the path and left this green waste under the hedges to form natural habitat and protection for the local wildlife.

From this very short piece of footpath we also collected 2 very large bags of rubbish which was mainly discarded dog bags.